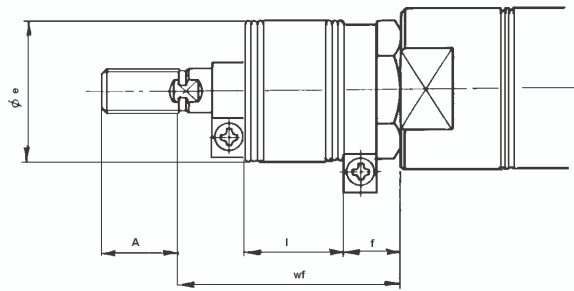
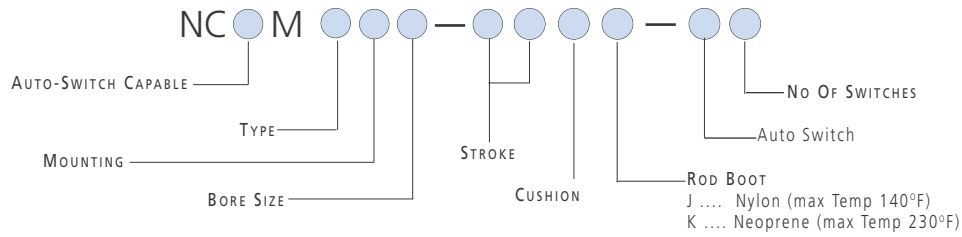


HOW TO ORDER SERIES NCM

DOUBLE ACTING CYLINDER / ROD BOOT



Bore (Inch)	A	øe	f	Wf											
				0~2	2.1~4	4.1~6	6.1~8	8.1~10	10.1~12	12.1~14	14.1~16	16.1~20	20.1~24	24.1~28	
3/4"	0.50	1.18	0.51	1.81	2.31	2.81	3.31	3.81	4.31	4.81	5.31	-	-	-	
7/8"	0.50	1.18	0.51	1.81	2.31	2.81	3.31	3.81	4.31	4.81	5.31	-	-	-	
1 1/16"	0.50	1.18	0.51	1.81	2.31	2.81	3.31	3.81	4.31	4.81	5.31	-	-	-	
1 1/4"	0.75	1.38	0.55	1.94	2.44	2.94	3.44	3.94	4.44	4.94	5.44	6.44	7.44	8.44	
1 1/2"	0.75	1.38	0.55	1.94	2.44	2.94	3.44	3.94	4.44	4.94	5.44	6.44	7.44	8.44	

Bore (Inch)	l											
	0~2	2.1~4	4.1~6	6.1~8	8.1~10	10.1~12	12.1~14	14.1~16	16.1~20	20.1~24	24.1~28	
3/4"	0.50	1.00	1.50	2.00	2.50	3.00	3.50	4.00	-	-	-	
7/8"	0.50	1.00	1.50	2.00	2.50	3.00	3.50	4.00	-	-	-	
1 1/16"	0.50	1.00	1.50	2.00	2.50	3.00	3.50	4.00	-	-	-	
1 1/4"	0.50	1.00	1.50	2.00	2.50	3.00	3.50	4.00	5.00	6.00	7.00	
1 1/2"	0.50	1.00	1.50	2.00	2.50	3.00	3.50	4.00	5.00	6.00	7.00	

TECHNICAL SPECIFICATIONS SERIES NCM

HIGH TEMPERATURE - XB6 OPTION

Bore Size (inch)	075 (3/4")	088 (7/8")	106 (1 1/6")	125 (1 1/4")	150 (1 1/2")
Fluid	Air				
Max Operating Pressure	1.75MPa / 250 PSI				
Min Operating Pressure	0.06MPa / 8 PSI				
Ambient and Fluid Temp	-20~150°C / -4~300°F				
Piston Speed	50~500mm/s / 2~20 in/sec				
Cushion	None				
Action	Double Acting				
Auto Switch Capable	No				

TECHNICAL SPECIFICATIONS

STANDARD STROKE LIST SERIES NCM

Mounting	Standard Stroke (inch)	Maximum Stroke
Front Nose	1/2, 1, 1 1/2, 2, 3, 4, 5, 6	6
Double End Rear Pivot	1/2, 1, 1 1/2, 2, 3, 5, 6, 8, 10, 12	12

SEE INSIDE FRONT COVER FOR
DETAILS OF YOUR LOCAL SALES OFFICE



FOR FURTHER TECHNICAL
DETAILS ON THIS
PRODUCT, REQUEST
CATALOG REFERENCE
N302

TECHNICAL SPECIFICATIONS SERIES NCM

LOW TEMPERATURE - XB7 OPTION

Bore Size (inch)	075 (3/4")	088 (7/8")	106 (1 1/6")	125 (1 1/4")	150 (1 1/2")
Fluid	Air				
Max Operating Pressure	1.75MPa / 250 PSI				
Min Operating Pressure	0.06MPa / 8 PSI				
Ambient and Fluid Temp	-30~70°C / -22~158°F				
Piston Speed	50~500mm/s / 2~20 in/sec				
Cushion	None				
Action	Double Acting				
Auto Switch Capable	No				

TECHNICAL SPECIFICATIONS SERIES NCM

LOW FRICTION / SPEED - XB9 OPTION

Bore Size (inch)	075 (3/4")	088 (7/8")	106 (1 1/6")	125 (1 1/4")	150 (1 1/2")
Fluid	Air				
Max Operating Pressure	1.75MPa / 250 PSI				
Min Operating Pressure	0.06MPa / 8 PSI				
Ambient and Fluid Temp	5~60°C / 40~140°F				
Piston Speed	50~500mm/s / 2~20 in/sec				
Cushion	None	Urethane	None	Urethane	None
Action	Double Acting				
Rod Material	SUS304				
Auto Switch Capable	Yes				

TECHNICAL SPECIFICATIONS SERIES NCM

STAINLESS STEEL ROD - XC6 OPTION

Bore Size (inch)	1 1/16"	1 1/4"	1 1/2"
Fluid	Air		
Max Operating Pressure	1.75MPa / 250 PSI		
Min Operating Pressure	0.06MPa / 8 PSI		
Ambient and Fluid Temp	-23~74°C / -10~165°F		
Piston Speed	50~500mm/s / 2~20 in/sec		
Cushion	None	Urethane	None
Rod Material	SUS304		
Auto Switch Capable	Yes		

ACCESSORIES SERIES NCM

PIVOT BRACKET (REAR PIVOT) NCMC

Part No	Applicable Bore	A	B	C	D	E	F	G	H	J	K	L	M	N	øP
NCM-PC075	3/4"; 7/8"; 1 1/16"; 1 1/4"	0.75	0.18	0.27	0.27	0.44	0.79	0.44	0.79	1.10	0.12	0.88	1.18	0.31	0.255
NCM-PC150	1 1/2"	1	0.25	0.27	0.27	0.62	0.98	0.62	0.98	1.50	0.12	1.38	1.75	0.38	0.38

ACCESSORIES SERIES NCM

PIVOT BRACKET (END MOUNT) NCME

Part No	Applicable Bore	A	B	C	D	øE	F	G	H	J	K	L	M	N
NCM-PE075	3/4"; 7/8"; 1 1/16"	1.25	1.95	0.35	0.38	0.27	0.25	0.12	1.18	0.88	0.75	1.10	0.18	0.31
NCM-PE125	1 1/4"; 1 1/2"	1.38	2.08	0.35	0.50	0.27	0.25	0.12	1.18	0.88	0.75	1.10	0.18	0.31

TECHNICAL SPECIFICATIONS

STANDARD STROKE LIST SERIES NCM

Mounting	Standard Stroke (inch)	Maximum Stroke
Front Nose	1/2, 1, 1 1/2, 2, 3, 4, 5, 6	6
Double End Rear Pivot	1/2, 1, 1 1/2, 2, 3, 5, 6, 8, 10, 12	12

TECHNICAL SPECIFICATIONS

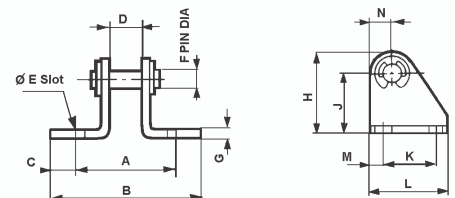
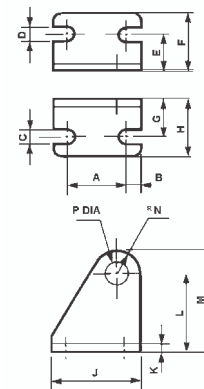
STANDARD STROKE LIST SERIES NCM

Mounting	Standard Stroke (inch)	Maximum Stroke
Front Nose	1/2, 1, 1 1/2, 2, 3, 4, 5, 6	6
Double End Rear Pivot	1/2, 1, 1 1/2, 2, 3, 5, 6, 8, 10, 12	12

TECHNICAL SPECIFICATIONS

STANDARD STROKE LIST SERIES NCM

Mounting	Standard Stroke (inch)
Front Nose	1/2, 1, 1 1/2, 2, 3, 4, 5, 6
Double End Rear Pivot	1/2, 1, 1 1/2, 2, 3, 5, 6, 8, 10, 12



FOR FURTHER TECHNICAL DETAILS ON THIS PRODUCT, REQUEST CATALOG REFERENCE N302